

carrera

4000 ECO



www.ilapak.com



PACKAGING MACHINERY

Carrera

4000 ECO

TECHNICAL SPECIFICATIONS

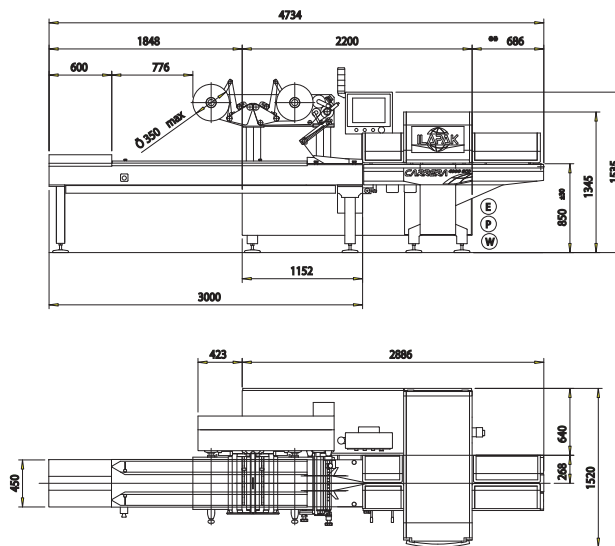
Machine speed	Up to 150 cycles per minute (single jaw), higher speed are possible with multiple sealing jaws head configuration. Production output dependent upon product, film and machine specifications.
Product dimensions	
LENGTH	50 – 550 mm (2 - 21.6") with any jaw centers and length.
WIDTH	20 – 230 mm (0.8 - 9") with jaw length 250 mm (9.8"). 20 – 300 mm (0.8 - 11.8") with jaw length 325 mm (12.8").
HEIGHT	Up to 90 mm (3.5") with jaw centre 150 mm (5.9"). Up to 120 mm (4.7") with jaw centre 180 mm (7.1").
Film cut-off	Up to 630 mm (24.8"). Cut-off defined as: product length + height + 40 mm (1.6"), depending on product characteristics.
Wrapping materials	Suitable heat-sealable films, such as plain, or co-extruded polypropylene (PP), laminate films (e.g OPP+PE); polythene films (PE) as well as cold-sealable films of suitable quality.
Film reel dimensions	
CORE Ø	76 mm (3").
OUTER Ø	350 mm (13.8").
WIDTH	500 mm (19.6").
Film reel max weight	40 Kg (88 lbs).
Electronic platform	Industrial PC with LINUX operating system; B&R modular I/O with ACOPOS multi servo drives and brushless motor
Power requirement	From 220 to 480 V, 50/60 Hz, 3-phase, 5 kVA.
Compressed air	6 bar, 1 l/min
Machine weight	900 kg (1984 lbs).

MAIN STANDARD FEATURES

- PC-controlled HFFS machine with rotary sealing jaws.
- Multi-axis drive technology with 4 independent drive circuits consisting of B&R brushless motors and drives, to drive: product infeed, sealing rollers, rotary sealing jaws and power roller for positive film unwinding.
- Load cell for precise and accurate film tensioning control.
- Friendly HMI 15" color touch screen with intuitive icons.
- 100+ program memory; two-level password protection security.
- Possibility for internet remote diagnostics and maintenance.
- First pair of sealing rollers tilting to adjust pack tightness.
- Servo-driven height adjustment of sealing jaws head.
- Precision temperature control circuits ensure seal strength and quality.
- No-product / No-bag.
- Misplaced product detection system.
- Fixed folding box adjustable type on option.
- Robust and modular mechanical construction with welded metal sheet main body.
- Epoxy powder coating or (optional) stainless-steel finishing.
- Hygienic design with cantilevered body and infeed, for easy clean down.
- Single film reel mounting with self-centering cones, right hand machine, 2 mt long infeed, standard, on option double reel holder and automatic reel splicer version.

...These specifications are not binding... Please discuss your needs with our local representative to configure these machines to your product's specific requirements.

ILAPAK is ISO 9001:2000 certified



In-line and right-angle types of automatic feeders available on request.
All measurements not specified in inches are given in millimeters.

These specifications are not binding. We reserve that right to change them without prior notice.